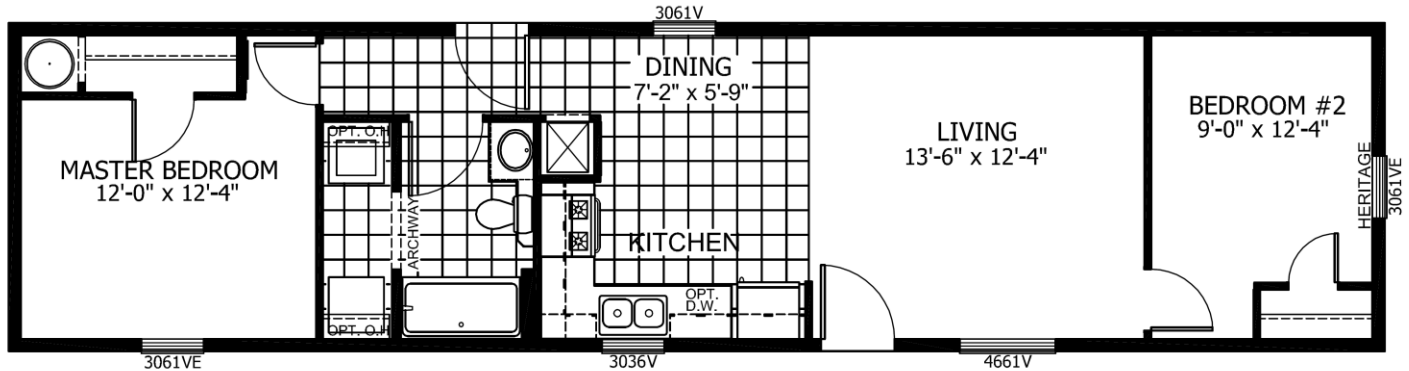




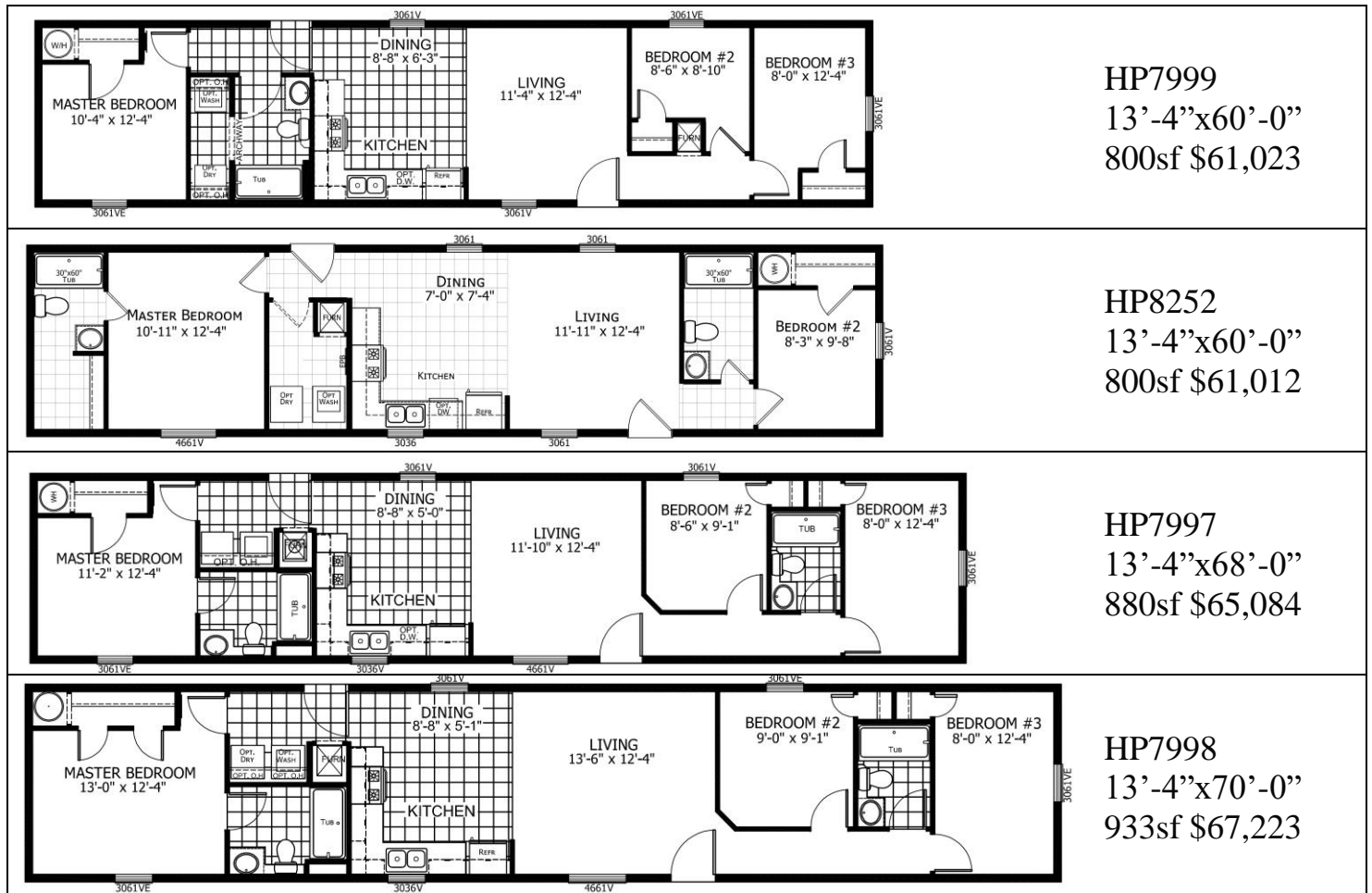
PATRICK J. WHITLEY  
105 PANTON RD  
VERGENNES, VERMONT 05491  
OFFICE - 802-877-3257  
FAX - 802-877-8369  
WWW.TCHVT.COM • INFO@TCHVT.COM

## DISPLAY MODEL Titan HP8000 Singlewide

13'-4"x56'-0" 747sf \$54,148



### Additional Models Available In This Series:



## **HIGHPOINT SPECIFICATIONS**

- \*DETACHABLE HITCH
- \*R-11 FLOOR INSULATION
- \* 2 X 6 FLOOR JOISTS 16" O.C.
- \*ARMOUR GUARD FLOOR VINYL
- \*ARENA CARPET T/O EXCEPT WET AREAS
- \*5# REBOND CARPET PAD
- \*DOUBLE 4" DUTCHLAP VINYL SIDING
- \*FOAM CORE EXTERIOR SHEATHING
- \*12" VINYL RAISED PANEL SHUTTERS F.D.S. AND HITCH END
- \*8'-0" SIDEWALL CONSTRUCTION W/FLAT CEILINGS
- \*2 X 6 EXTERIOR WALL STUDS 16" O.C., R-19 INSULATION
- \*36/82 STEEL FRONT DOOR WITH STORM
- \*36/82 STEEL REAR DOOR WITH STORM
- \*VINYL THERMOPANE WINDOWS (NO GRIDS IN WINDOWS)
- \*JELLY JAR LIGHTS FRONT & REAR DOORS
- \* 3/12 -30 LB. ROOF LOAD
- \*SHINGLED ROOF WITH RIDGE VENT
- \*R-30 ROOF INSULATION
- \*1-1/2" OVERHANGS ON SIDEWALLS
- \*1/2" DRYWALL CEILING, STIPPLE FINISH
- \*STAINLESS STEEL KITCHEN SINK
- \*18 CU. FT. F.F. REFRIGERATOR
- \*30" GAS RANGE
- \* LIGHTED/VENTED RANGE HOOD
- \*31" OVER HEAD CABINETS
- \*SHELF OVER FRIDGE
- \*MDF RAISED PANEL CABINET DOORS AND MDF STILES
- \*HIDDEN CABINET HINGES
- \*ANTIQUE BRUSHED NICKLE CABINET KNOBS
- \*FORMICA BACKSPLASH
- \*NO MOLDING ON O.H. CABINETS
- \*BANK OF DRAWERS KITCHEN
- \*NO CENTER SHELF IN KITCHEN BASE

- \*FULL SIZE 60" 1 PC. FIBERGLASS TUBS
- \*SHOWER CURTAIN W/ROD ALL BATHS
- \*POWERED VENT FAN WITH LIGHT
- \*MDF RAISED PANEL CABINET DOORS AND MDF STILES
- \*FORMICA BACKSPLASH
- \*PORCELAIN COMMODES
- \*36" BATH VANITIES
- \*MIRROR AND LED SURFACE MOUNT LIGHT OVER VANITY
- \*100 AMP ELECTRICAL SERVICE
- \*DUAL CONTROL THERMOSTAT
- \*WIRE AND VENT FOR DRYER
- \*4" LED SURFACE MOUNT CEILING LIGHTS THROUGH OUT HOME
- \*PLUMB FOR WASHER
- \*30-GALLON ELECTRIC H/W HEATER WITH DRIP PAN
- \*MAIN WATER SHUT-OFF ONLY
- \*MILLER A.G. GAS FURNACE WITH A-COIL CABINET
- \*IN LINE HEAT DUCT
- \*VALANCES T/O
- \*1/2" V.O.G. WALL BOARD (NORTHWOOD MINERAL T/O)
- \*ANTIQUE BRUSHED NICKLE DOOR KNOBS
- \*WIRE VENTED SHELF ALL CLOSETS
- \*FLOOR MOUNTED DOOR STOPS

## **ADDITIONAL OPTIONS INCLUDED IN MODEL**

- 40# ROOF LOAD
- ALL BRAKE AXLES
- ROOF JACK EXTENSION
- NEW ENGLAND CODE
- PHOTO ELECTRIC SMOKE DETECTOR
- TONE & VOICE COMBO DETECTORS
- CARBON MONOXIDE DETECTORS
- PHOTO ELEC./CO COMBO X2
- VINYL FLOORING THROUGHOUT
- ENERGY STAR PACKAGE:
  - R-33 Roof Insulation, R-33 Floor Insulation,
  - R-19 Wall Insulation, Programable Thermostat

**Home Prices Include: House, Set-up, Sales Tax, Freight, Jack Stands, Steps At Doors, Insulated Skirting and HUD Inspection**

**Price Does Not Include: Excavation, Slab, Slab Insulation, Electrical Connections, Plumbing Hookups, Gas Connections & Testing, Fuel Tanks, Permits, Any Other Sitework Needed**

**\*Pricing Based On Ordering A New Home As Of 4/23/21 Options & Prices May Change Without Notice For Newly Ordered Homes\*\***